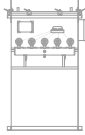


## *Pulse Jet Bin Vents*



### Pleated Element Bin Vent Dust Collectors

For applications requiring 211 to 891 ft<sup>2</sup> of cloth area per unit with 20", 40", 54" long filters.

**LIBERATOR** bin vents bring pleated filter technology to container venting and dust recovery.

**LIBERATOR** bin vents provide additional filter surface area in a compact design for high efficient applications involving storage bins, silos, or conveyor transfer points.



#### Features

- Ships completely assembled for rapid installation.
- Units install directly on bins and silos via the supplied flanged inlet. Ductwork is eliminated and installation expenses reduced.
- Low compressed air requirements save energy costs.
- Welded all steel construction provides long-term reliability with minimum maintenance requirements.
- Compact, advanced pleated design provides increased filtering capacity for high efficiency application flexibility.
- Economical solution to meet ever-increasing regulatory requirements.
- 1-1/2" pulse valves ensure filters clean during heavy loading.
- Filters are changed from the clean side of the collector housing. Operators are not in direct contact with toxic or valuable collected product. Fugitive emissions associated with dirty side change-outs (typical cartridge collector) are eliminated.
- Operating temperatures to 200 °F.

#### Comes Complete With:

- Spun Bond Polyester filters using EPA/ETV verified media.
- Double diaphragm pulse valves and compressed air manifold system with NEMA 4 solenoid pilot valve enclosures.
- Programmable solid-state timer controls in a NEMA 4 enclosure. Pre-wired and set-up for continuous cleaning.
- Primed and painted with industrial grade enamel.
- Flanged inlet with safety mesh.

#### Operating Requirements

- 115 VAC, 60 Hz. single phase current required for sequence timer
- 90 to 100 PSIG clean, dry, uncontaminated compressed air supply.

#### Options

- NEMA 7 or 9 controls for potentially explosive environments.
- Stainless steel construction for corrosive applications.
- Aramid, PPS, PTFE Membrane, and other filter medias available. Hydro and Oleo phobic treatment, and grounding options.
- High temperature configurations.
- Explosion panels.
- Custom discharge height.
- Pressure readout gage.
- Clean on demand controller.
- Service platform.
- Exhaust rain hood with mesh protection.
- Hopper configuration for remote installations.
- System engineering and install services available.

**CALL 800-686-9297**

**For Application  
Assistance**

CALL 800-686-9297



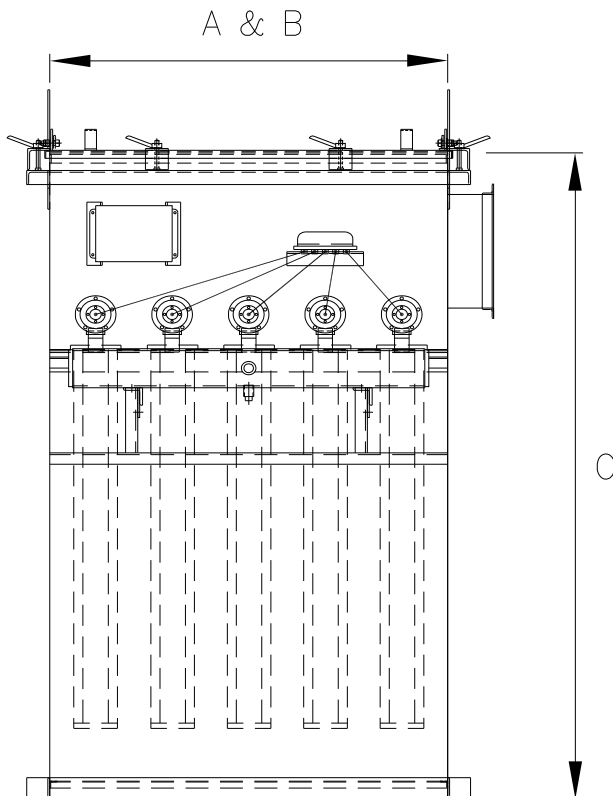
# Schust Engineering, Inc.

Pre-Engineered Series:  
Bin Vent Collectors  
TB-PPB-R1-7-11

**LIBERATOR™**  
**DUST COLLECTORS**

www.schustengineering.com

Model	Filter Information				Approximate Dimensions		
	Number of Filters	Length of Filter	Number of Pleats	Cloth Area	A	B	C
44-PPB-20-40	16	20.4"	40	211 ft. <sup>2</sup>	42"	42"	58"
44-PPB-40-40		40.4"		422 ft. <sup>2</sup>			78"
44-PPB-54-40		54.4"		570 ft. <sup>2</sup>			92"
55-PPB-20-40	25	20.4"	40	330 ft. <sup>2</sup>	52"	52"	58"
55-PPB-40-40		40.4"		660 ft. <sup>2</sup>			78"
55-PPB-54-40		54.4"		891 ft. <sup>2</sup>			92"



### STANDARD FEATURES

- ALL WELDED HEAVY DUTY CONSTRUCTION
- NEMA 4 TIMER CONTROLS AND SOLENOID ENCLOSURES
- FLANGED INLET WITH SAFETY MESH
- SCHUST BLUE INDUSTRIAL GRADE ENAMEL PAINT

### Notes:

Maximum operating temperature of 200 degrees Fahrenheit for standard filter media. Other filter media options available.

Dimensions and product features subject to updating without notice.

Schust Engineering, Inc.

701 North Street Auburn, Indiana 46706 Phone: (800) 686-9297