

**LIBERATOR**  
DUST COLLECTORS

### *Pulse-Jet Walk-in Plenum*



#### Standard Pulse Jet Bag Houses

For applications requiring 1,244 to 4,701 ft<sup>2</sup> of cloth area per unit with 10' or 12' long filter bags.

Features like our exclusive *Filter Fit System*<sup>™</sup> have been developed to provide a positive mechanical-assist seal at the tube sheet in all of our **LIBERATOR** bag house collectors.

An exacting, reinforced venturi and rolled bottom cup cage are stabilized to provide superior support ensuring a focused, efficient pulse for accurate filter clean down and performance where it counts the most.



#### Additional Standard Features

- Typically ships as a pre-assembled single unit from the factory. Field assembly and install costs are reduced.
- Modular design for application and volume flexibility.
- Snap-in filter tube sheet design.
- Welded 10 ga. carbon steel construction.
- Operating temperatures to 275 °F.

#### Benefits of Walk-in Plenums

- Bags can be changed and the unit maintained from the clean side of the collector housing. Operators are not in direct contact with toxic or valuable collected product.
- The collector system can be located outside, not taking up prime production floor space.
- Reclaimed product is protected from rain and snow during maintenance and inspections.
- Emergency filter change-outs performed quickly regardless of the weather, making the walk-in plenum collector suitable for critical operations requiring minimal down time.

#### Comes Complete With:

- 100% Polyester filters with double beaded stainless steel snap band.
- Rugged 12 wire filter support cages with reinforced integral venturi.
- Double diaphragm pulse valves and compressed air manifold system with NEMA 4 solenoid pilot valve enclosures.
- Programmable solid-state timer controls in a NEMA 4 enclosure. Pre-wired and set-up for continuous cleaning.
- Caged ladder and access platform designed to meet OSHA safety requirements.
- Structural steel support.
- Primed and painted with industrial grade enamel.

#### Options

- NEMA 7 or 9 controls for potentially explosive environments.
- Stainless steel construction for corrosive applications.
- Aramid, P84 (Polyimide), PTFE Membrane, 100% White Teflon, Polypropylene, Fiber Glass and other filter medias.
- 500°F operating temperature configurations.
- Explosion panels.
- Custom discharge height.
- Pressure readout gage.
- Rotary valve or other specified discharge equipment.
- Clean on demand controller.
- System engineering and install services available.

**CALL 800-686-9297**

**For Application Assistance**

CALL 800-686-9297



# Schust Engineering, Inc.

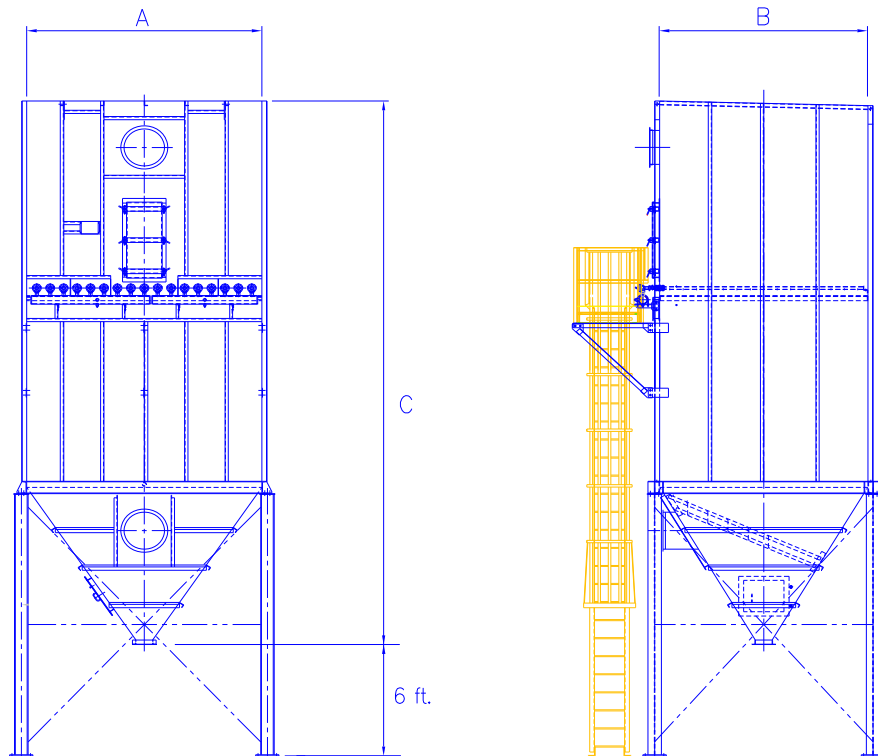
Pre-Engineered Series  
Pulse-Jet Walk-in Plenum Collectors  
Standard

**LIBERATOR™**  
**DUST COLLECTORS**

www.schustengineering.com

Model	Cloth Area / Module (sq. ft.)	No. of Bags	Approximate Dimensions		
	120"		A	B	C
<b>Standard</b>					
99-PBW-10	1,244	81	6'-4"	6'-4"	29'-3"
1111-PBW-10	1,858	121	7'-8"	7'-8"	29'-3"
1313-PBW-10	2,595	169	9'-0"	9'-0"	29'-3"
1515-PBW-10	3,454	225	10'-4"	10'-4"	29'-3"
1715-PBW-10	3,915	255	11'-8"	10'-4"	29'-3"

Model	Cloth Area / Module (sq. ft.)	No. of Bags	Approximate Dimensions		
	144"		A	B	C
<b>Standard</b>					
99-PBW-12	1,493	81	6'-4"	6'-4"	34'-9"
1111-PBW-12	2,231	121	7'-8"	7'-8"	34'-9"
1313-PBW-12	3,116	169	9'-0"	9'-0"	34'-9"
1515-PBW-12	4,148	225	10'-4"	10'-4"	34'-9"
1715-PBW-12	4,701	255	11'-8"	10'-4"	34'-9"



Schust Engineering, Inc.

701 North Street Auburn, Indiana 46706 Phone: (800) 686-9297