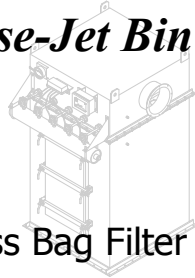


LIBERATOR™
DUST COLLECTORS

Pulse-Jet Bin Vent



Bottom Access Bag Filter Dust Collectors

For applications requiring 17 to 432 ft² of cloth area per unit with 3', 4', 6', or 8' long filter bags.

LIBERATOR PVB models feature bottom access design, ensuring safe filter maintenance from silo-top elevation.

PVB bin vents incorporate a hinged access door with easy-grip zinc-plated handles allowing tool-less entry.

Our OEM venturi design maximizes cleaning potential ensuring Pulse efficiency.

Emergency filter change-outs performed quickly regardless of the weather, making the bottom access bin vent suitable for critical operations requiring minimal down time.

Features:

- Units install directly on bins and silos via the supplied flanged inlet. Ductwork is eliminated and installation expenses reduced.
- The PVB series offers 17 to 432 ft² of cloth area per unit with 3, 4, 6, or 8 long filter bags.
- Economical solution to meet ever-increasing regulatory requirements.
- Welded 12 ga. carbon steel construction.
- Operating temperatures to 275 °F.
- Tuned pulse jet cleaning system with low compressed air requirements to save on energy costs.
- Hinged Access door.

Comes Complete With:

- Self-supported 100% Polyester felt filters.
- Rugged 12 wire filter support cages.
- Programmable solid-state timer controls in a NEMA 4 enclosure. Prewired and programmed for continuous cleaning.
- Wire mesh internal bottom grid.
- Primed and painted with industrial grade enamel.

Operating Requirements:

- 115 VAC, 60 Hz. single phase current required for sequence timer.
- 90 to 100 PSIG clean, dry, uncontaminated compressed air supply.



Options:

- NEMA 7 or 9 controls for potentially explosive environments.
- Stainless steel construction.
- Differential pressure gage.
- Flanged outlet.
- Exhaust weather hood with mesh protection.
- Hopper configuration for remote installations.
- System engineering and install services available.
- Two (2) access doors available.

CALL 260-925-9800

For Application Assistance



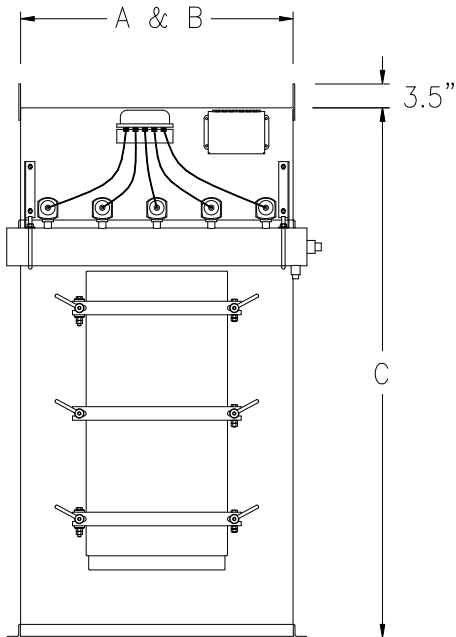
Schust Engineering, Inc.

LIBERATOR™ DUST COLLECTORS

Pre-Engineered Series:
Pulse Jet - Bin Vent - Bottom Access-Bag Filters
TB-PVB-R1-8-14

www.schustengineering.com

Model	Filter Information			Approximate Dimensions		
	Number of Bags	Length of Bags	Cloth Area (sq. ft.)	A	B	C
22-PVB-3	4	36"	17	18"	18"	66"
22-PVB-4		48"	23			78"
22-PVB-6		72"	35			102"
22-PVB-8		96"	48			126"
33-PVB-3	9	36"	38	26"	26"	66"
33-PVB-4		48"	52			78"
33-PVB-6		72"	80			102"
33-PVB-8		96"	108			126"
44-PVB-3	16	36"	68	34"	34"	66"
44-PVB-4		48"	93			78"
44-PVB-6		72"	142			102"
44-PVB-8		96"	192			126"
55-PVB-3	25	36"	107	42"	42"	66"
55-PVB-4		48"	146			78"
55-PVB-6		72"	223			102"
55-PVB-8		96"	300			126"
66-PVB-3	36	36"	154	50"	50"	66"
66-PVB-4		48"	210			78"
66-PVB-6		72"	321			102"
66-PVB-8		96"	432			126"



STANDARD FEATURES

ALL WELDED HEAVY DUTY CONSTRUCTION
NEMA 4 TIMER CONTROLS AND SOLENOID ENCLOSURES

SCHUST BLUE INDUSTRIAL GRADE ENAMEL PAINT

12 GA. CONSTRUCTION FOR UP TO 17" W.C.

Notes:

Maximum operating temperature of 275 degrees Fahrenheit for standard filter media. Other filter media options available.

Dimensions and product features subject to updating without notice.

