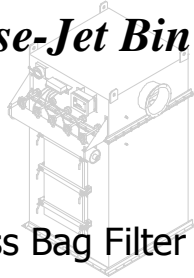


## *Pulse-Jet Bin Vent*



### Bottom Access Bag Filter Dust Collectors

For applications requiring 17 to 432 ft<sup>2</sup> of cloth area per unit with 3', 4', 6', or 8' long filter bags.

**LIBERATOR** PVB models feature bottom access design, ensuring safe filter maintenance from silo-top elevation.

PVB bin vents incorporate a hinged access door with easy-grip zinc-plated handles allowing tool-less entry.

Our OEM venturi design maximizes cleaning potential ensuring Pulse efficiency.

Emergency filter change-outs performed quickly regardless of the weather, making the bottom access bin vent suitable for critical operations requiring minimal down time.

#### **Features:**

- Units install directly on bins and silos via the supplied flanged inlet. Ductwork is eliminated and installation expenses reduced.
- The PVB series offers 17 to 432 ft<sup>2</sup> of cloth area per unit with 3', 4', 6', or 8' long filter bags.
- Economical solution to meet ever-increasing regulatory requirements.
- Welded 12 ga. carbon steel construction.
- Operating temperatures to 275 °F.
- Tuned pulse jet cleaning system with low compressed air requirements to save on energy costs.
- Hinged Access door.

#### **Comes Complete With:**

- Self-supported 100% Polyester felt filters.
- Rugged 12 wire filter support cages.
- Programmable solid-state timer controls in a NEMA 4 enclosure. Prewired and programmed for continuous cleaning.
- Wire mesh internal bottom grid.
- Primed and painted with industrial grade enamel.

#### **Operating Requirements:**

- 115 VAC, 60 Hz. single phase current required for sequence timer.
- 90 to 100 PSIG clean, dry, uncontaminated compressed air supply.

**LIBERATOR™**  
DUST COLLECTORS



#### **Options:**

- NEMA 7 or 9 controls for potentially explosive environments.
- Stainless steel construction.
- Differential pressure gage.
- Flanged outlet.
- Exhaust weather hood with mesh protection.
- Hopper configuration for remote installations.
- System engineering and install services available.
- Two (2) access doors available.
- Pleated filters in lieu of bag filters.

**CALL (260)-925-9800**

**For Application Assistance**



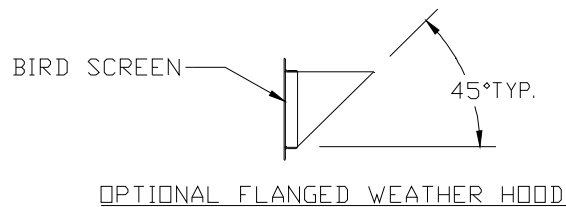
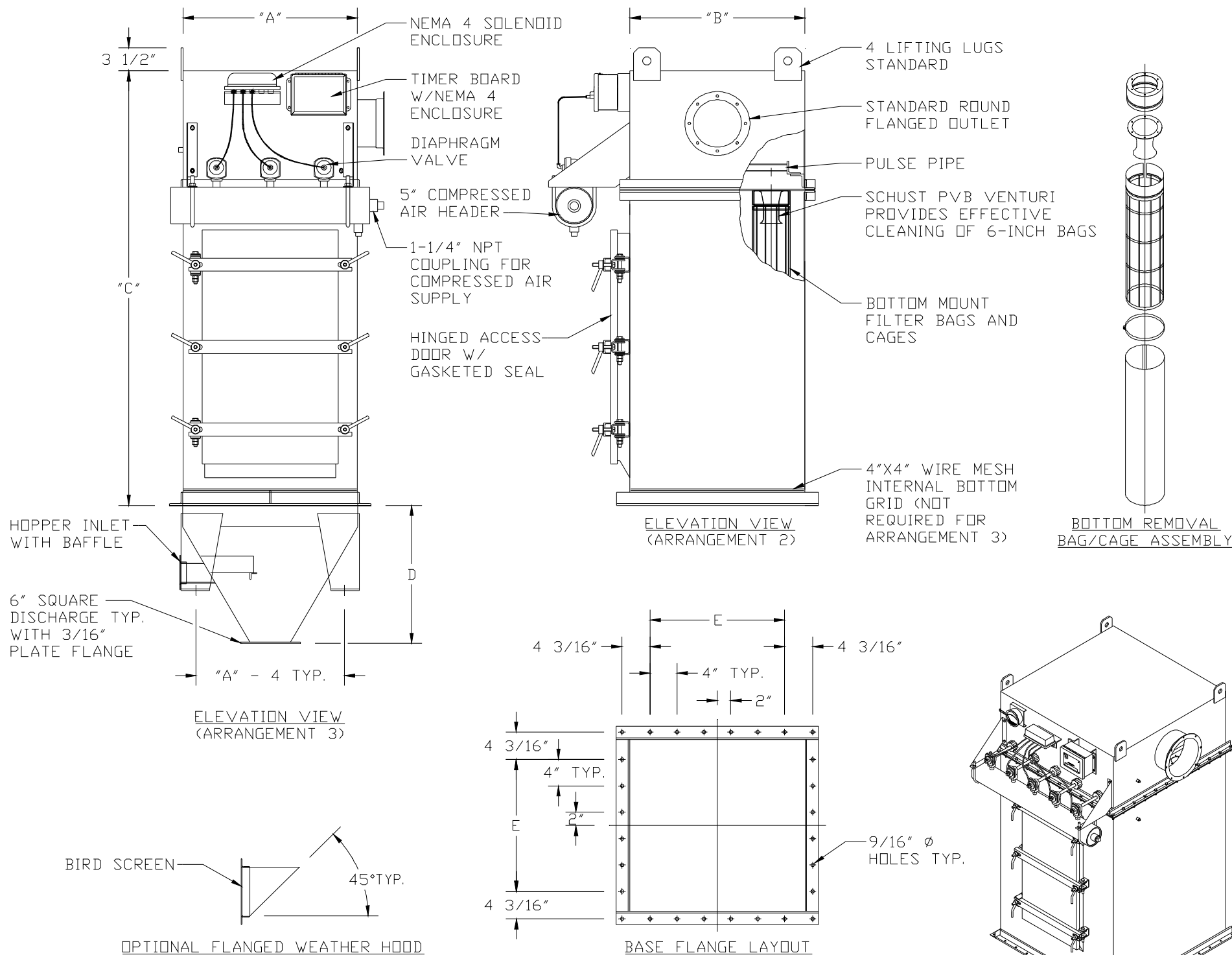
MODELS 22-PVB-3 TO 66-PVB-8								
MODEL NUMBER	CLOTH AREA (SQ. FT.)	QTY. OF FILTERS	FILTER LENGTH	DIMENSIONS				
				A	B	C	D	E
22-PVB-3	17	4	3'	1'-6"	1'-6"	5'-6"	1'-2"	12"
22-PVB-4	23		4'			6'-6"		
22-PVB-6	35		6'			8'-6"		
22-PVB-8	48		8'			10'-6"		
33-PVB-3	38	9	3'	2'-2"	2'-2"	5'-6"	1'-9"	20"
33-PVB-4	52		4'			6'-6"		
33-PVB-6	80		6'			8'-6"		
33-PVB-8	108		8'			10'-6"		
44-PVB-3	68	16	3'	2'-10"	2'-10"	5'-6"	2'-8"	28"
44-PVB-4	93		4'			6'-6"		
44-PVB-6	142		6'			8'-6"		
44-PVB-8	192		8'			10'-6"		
55-PVB-3	107	25	3'	3'-6"	3'-6"	5'-6"	2'-11"	36"
55-PVB-4	146		4'			6'-6"		
55-PVB-6	223		6'			8'-6"		
55-PVB-8	300		8'			10'-6"		
66-PVB-3	154	36	3'	4'-2"	4'-2"	5'-6"	3'-6"	44"
66-PVB-4	210		4'			6'-6"		
66-PVB-6	321		6'			8'-6"		
66-PVB-8	432		8'			10'-6"		

**STANDARD FEATURES**

1. ALL WELDED HEAVY DUTY CONSTRUCTION
2. NEMA 4 TIMER CONTROLS AND SOLENOID ENCLOSURES
3. SCHUST BLUE INDUSTRIAL ENAMEL PAINT
4. 12 GA CONSTRUCTION FOR -17" W.C. STATIC PRESSURE
5. HINGED BOTTOM ACCESS DOOR FOR FILTER SERVICE
6. PULSE JET CLEANING SYSTEM
7. 60° HOPPER (ARRANGEMENT 3 ONLY)
8. WIRE MESH INTERNAL BOTTOM GRID (NOT REQUIRED FOR ARRANGEMENT 3)

**OPTIONAL FEATURES**

1. NEMA 7 OR 9 CONTROLS FOR POTENTIALLY EXPLOSIVE ENVIRONMENTS
2. STAINLESS STEEL CONSTRUCTION
3. DIFFERENTIAL PRESSURE GAGE
4. EXHAUST WEATHER HOOD WITH MESH PROTECTION
5. SUPPORT STRUCTURE
6. SERVICE PLATFORM
7. TWO (2) ACCESS DOORS AVAILABLE



PULSE JET (BIN) VENT BOTTOM ACCESS

DIMENSIONS ARE NOT CERTIFIED

**LIBERATOR™**  
DUST COLLECTORS

CALL 1-800-868-9297 FOR ASSISTANCE

THIS DRAWING IS THE PROPERTY OF SCHUST ENGINEERING INCORPORATED AND IS LOANED SUBJECT TO THE CONDITION THAT IT SHALL NOT BE REPRODUCED, COPIED, LOANED OR OTHERWISE DISPOSED OF, DIRECTLY OR INDIRECTLY. IT SHALL BE USED AS A MEANS OF REFERENCE TO WORK FURNISHED BY THIS COMPANY ONLY AND IS NOT TO BE SUBMITTED TO OUTSIDE PARTIES FOR EXAMINATION WITHOUT OUR WRITTEN APPROVAL.

**SCHUST**  
STANDARD PRODUCTS DIVISION  
A Division of Schust Engineering, Inc.

PULSE-JET BIN VENT BTM ACCESS BAG FILTER MODEL 22-PVB-3 TO 66-PVB-8  
PRODUCT MAY BE UPDATED WITHOUT NOTICE

DRAWN BY	DWG. DATE	CHECKED BY	DWG. SCALE	DRAWING NUMBER	REV.
J.V.	10/17/13		NTS	PVB-001	