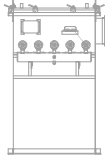


Pulse Jet Bin Vents

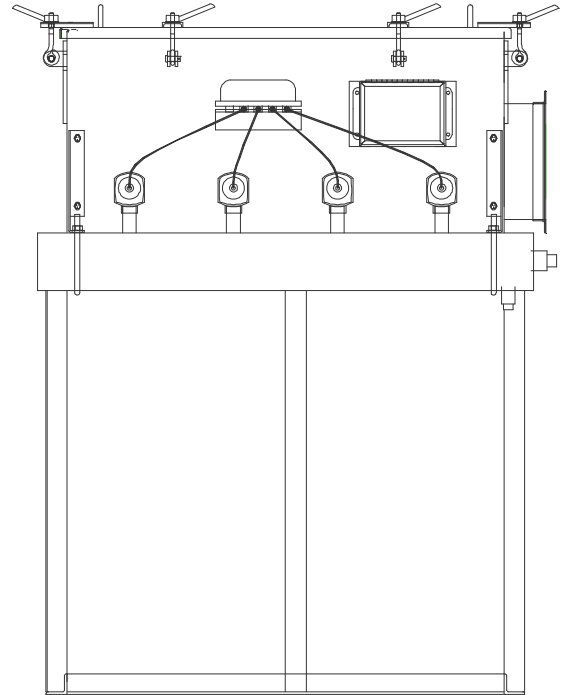


Roof Access Pleated Element Dust Collectors

For applications requiring 59 to 1,033 ft² of cloth area per unit with 21", 41", 56" long filters.

LIBERATOR™ PVR bin vents bring pleated filter technology to container venting and dust recovery.

LIBERATOR™ PVR bin vents provide additional filter surface area in a compact design for high efficient applications involving storage bins, silos, or conveyor transfer points.



Features:

- Ships completely assembled for rapid installation.
- Units install directly on bins and silos via the supplied flanged inlet. Ductwork is eliminated and installation expenses reduced.
- Low compressed air requirements save energy costs.
- Welded all steel construction provides long-term reliability with minimum maintenance requirements.
- Compact, advanced pleated design provides increased filtering capacity for high efficiency application flexibility.
- Economical solution to meet ever-increasing regulatory requirements.
- Filters are changed from the clean side of the collector housing. Operators are not in direct contact with toxic or valuable collected product. Fugitive emissions associated with dirty side change-outs (typical cartridge collector) are significantly reduced.
- Operating temperatures to 225 °F.

Comes Complete With:

- Spun Bond Polyester filters featuring a high-flow orifice which develops 30% more cleaning energy.
- Diaphragm pulse valves and compressed air manifold system with NEMA 4 solenoid pilot valve enclosures.
- Programmable solid-state timer controls in a NEMA 4 enclosure. Pre-wired and set-up for continuous cleaning.
- Primed and painted with industrial grade enamel.
- Flanged inlet with safety mesh.

Operating Requirements:

- 115 VAC, 60 Hz. single phase current required for sequence timer
- 90 to 100 PSIG clean, dry, uncontaminated compressed air supply.

Options:

- NEMA 7 or 9 controls for potentially explosive environments.
- Stainless steel construction for corrosive applications.
- Aramid, PPS, PTFE Membrane, and other filter media available. Hydro and Oleo phobic treatment and grounding options.
- High temperature configurations.
- Explosion panels.
- Hinged access door.
- Pressure readout gage.
- Clean on demand controller.
- Service platform.
- Exhaust rain hood with mesh protection.
- Hopper configuration for remote installations.
- System engineering and install services available.
- Bag filters in lieu of pleated filters.

CALL 260-925-9800

For Application Assistance

CALL 260-925-9800



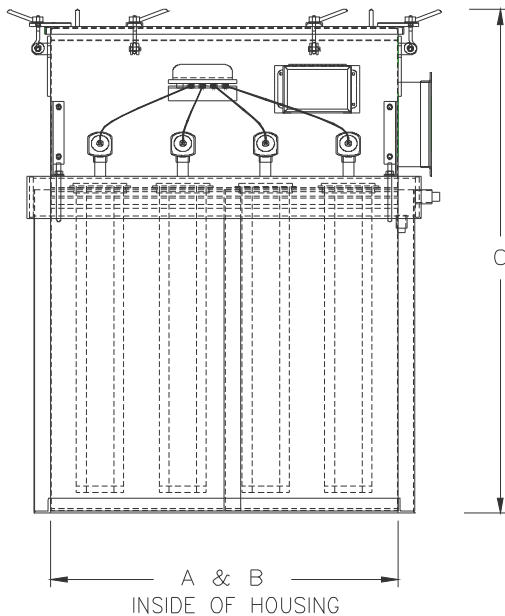
Schust Engineering, Inc.

Pre-Engineered Series:
Pulse-Jet Bin Vent Roof Access Pleated Filters
TB-PPB-R1-8-14

LIBERATOR™
DUST COLLECTORS

www.schust.com

Model	Filter Information				Approximate Dimensions		
	Number of Filters	Length of Filter	Number of Pleats	Cloth Area	A	B	C
22-PVR-21-54	4	21.0"	54	59 ft. ²	22"	22"	46"
22-PVR-41-54		40.7"		118 ft. ²			66"
22-PVR-56-54		56.4"		165 ft. ²			82"
33-PVR-21-54	9	21.0"	54	133 ft. ²	32"	32"	46"
33-PVR-41-54		40.7"		266 ft. ²			66"
33-PVR-56-54		56.4"		372 ft. ²			82"
44-PVR-21-54	16	21.0"	54	237 ft. ²	42"	42"	46"
44-PVR-41-54		40.7"		474 ft. ²			66"
44-PVR-56-54		56.4"		661 ft. ²			82"
55-PVR-21-54	25	21.0"	54	370 ft. ²	52"	52"	46"
55-PVR-41-54		40.7"		740 ft. ²			66"
55-PVR-56-54		56.4"		1033 ft. ²			82"



STANDARD FEATURES

- ALL WELDED HEAVY DUTY CONSTRUCTION
- NEMA 4 TIMER CONTROLS AND SOLENOID ENCLOSURES
- FLANGED INLET WITH SAFETY MESH
- SCHUST BLUE INDUSTRIAL GRADE ENAMEL PAINT

Notes:

Maximum operating temperature of 225 degrees Fahrenheit for standard filter media. Other filter media options available. Dimensions and product features subject to updating without notice.

Schust Standard Products

1610 South Grandstaff Auburn, Indiana 46706 Phone: (260) 925-9800