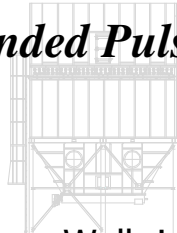


LIBERATOR™
DUST COLLECTORS

Extended Pulse-Jet



Bag House Walk-in Access

For applications requiring 4,606 to 16,592 ft² of cloth area per unit with 10' or 12' long filter bags.

Features like our exclusive *Filter Fit System™* have been developed to provide a positive mechanical-assist seal at the tube sheet in all of our **LIBERATOR** bag house collectors.

An exacting, reinforced venturi and rolled bottom cup cage are stabilized to provide superior support ensuring a focused, efficient pulse for accurate filter clean down and performance where it counts the most.



Additional Extended Features:

- Extended housing provides more filtering capacity for higher volume or extreme efficiency applications.
- Modular design for application and volume flexibility.
- Snap-in filter tube sheet design.
- Welded 10 ga. carbon steel construction.
- Operating temperatures to 275 °F.

Benefits of Walk-in Access:

- Bags can be changed and the unit maintained from the clean side of the collector housing. Operators are not in direct contact with toxic or valuable collected product.
- The collector system can be located outside, not taking up prime production floor space.
- Reclaimed product is protected from rain and snow during maintenance and inspections.
- Emergency filter change-outs performed quickly regardless of the weather, making the walk-in plenum collector suitable for critical operations requiring minimal down time.

Comes Complete With:

- 100% Polyester filters with double beaded stainless steel snap band.
- Rugged 12 wire filter support cages with reinforced integral venturi.
- Double diaphragm pulse valves and compressed air manifold system with NEMA 4 solenoid pilot valve enclosures.
- Programmable solid-state timer controls in a NEMA 4 enclosure. Pre-wired and set-up for continuous cleaning.
- Caged ladder and access platform designed to meet OSHA safety requirements.
- Structural steel support.
- Primed and painted with industrial grade enamel.

Options:

- NEMA 7 or 9 controls for potentially explosive environments.
- Stainless steel construction for corrosive applications.
- Aramid, P84 (Polymide), PTFE Membrane, 100% White Teflon, Polypropylene, Fiber Glass and other filter medias.
- 500°F operating temperature configurations.
- Explosion panels.
- Custom discharge height.
- Pressure readout gage.
- Rotary valve or other specified discharge equipment.
- Clean on demand controller.
- System engineering and install services available.

CALL 260-925-9800

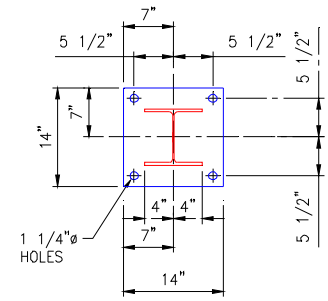
For Application Assistance



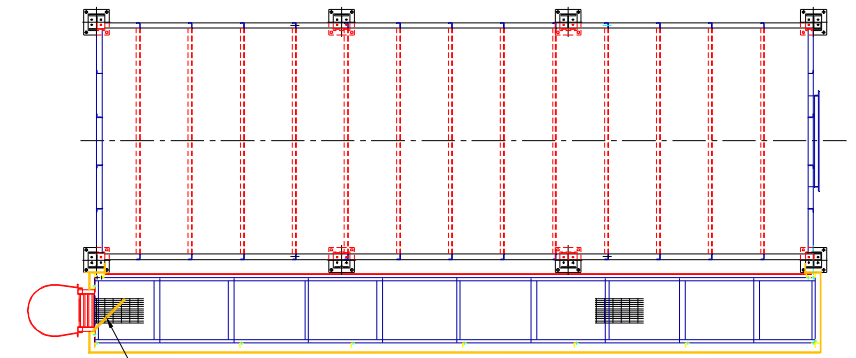
Extended Module: Pulse-Jet Walk-In Access Design

| Extended Series Pulse-Jet Baghouses W/ Walk-In Access | | | | | | | | |
|---|----------------------|-------------|------------|--------|--------|---------|--------|-----------|
| Model Number | Cloth Area (sq. ft.) | No. of Bags | Dimensions | | | | | |
| | | | A | B | C | D | E | F |
| 2015-PBW-10-6 | 4,606 | 300 | 10'-4" | 13'-8" | 35'-4" | 14'-2" | N/A | 10'-10.5" |
| 2115-PBW-10-6 | 4,836 | 315 | 10'-4" | 14'-4" | 35'-4" | 14'-10" | N/A | 10'-10.5" |
| 2215-PBW-10-6 | 5,066 | 330 | 10'-4" | 15'-0" | 35'-4" | 15'-6" | N/A | 10'-10.5" |
| 2315-PBW-10-6 | 5,296 | 345 | 10'-4" | 15'-8" | 35'-4" | 16'-2" | N/A | 10'-10.5" |
| 2415-PBW-10-6 | 5,527 | 360 | 10'-4" | 16'-4" | 35'-4" | 16'-10" | N/A | 10'-10.5" |
| 2515-PBW-10-6 | 5,757 | 375 | 10'-4" | 17'-0" | 35'-4" | 17'-6" | N/A | 10'-10.5" |
| 2615-PBW-10-6 | 5,987 | 390 | 10'-4" | 17'-8" | 35'-4" | 18'-2" | N/A | 10'-10.5" |
| 2715-PBW-10-6 | 6,218 | 405 | 10'-4" | 18'-4" | 35'-4" | 9'-5" | N/A | 10'-10.5" |
| 2815-PBW-10-6 | 6,448 | 420 | 10'-4" | 19'-0" | 35'-4" | 9'-9" | N/A | 10'-10.5" |
| 2915-PBW-10-6 | 6,678 | 435 | 10'-4" | 19'-8" | 35'-4" | 10'-1" | N/A | 10'-10.5" |
| 3015-PBW-10-6 | 6,910 | 450 | 10'-4" | 20'-4" | 35'-4" | 10'-5" | N/A | 10'-10.5" |
| 3115-PBW-10-6 | 7,139 | 465 | 10'-4" | 21'-0" | 35'-4" | 10'-9" | N/A | 10'-10.5" |
| 3215-PBW-10-6 | 7,369 | 480 | 10'-4" | 21'-8" | 35'-4" | 11'-1" | N/A | 10'-10.5" |
| 3315-PBW-10-6 | 7,599 | 495 | 10'-4" | 22'-4" | 35'-4" | 11'-5" | N/A | 10'-10.5" |
| 3415-PBW-10-6 | 7,830 | 510 | 10'-4" | 23'-0" | 35'-4" | 11'-9" | N/A | 10'-10.5" |
| 3515-PBW-10-6 | 8,060 | 525 | 10'-4" | 23'-8" | 35'-4" | 12'-1" | N/A | 10'-10.5" |
| 3615-PBW-10-6 | 8,290 | 540 | 10'-4" | 24'-4" | 35'-4" | 12'-5" | N/A | 10'-10.5" |
| 3715-PBW-10-6 | 8,521 | 555 | 10'-4" | 25'-0" | 35'-4" | 12'-9" | N/A | 10'-10.5" |
| 3815-PBW-10-6 | 8,751 | 570 | 10'-4" | 25'-8" | 35'-4" | 13'-1" | N/A | 10'-10.5" |
| 3915-PBW-10-6 | 8,981 | 585 | 10'-4" | 26'-4" | 35'-4" | 13'-5" | N/A | 10'-10.5" |
| 4015-PBW-10-6 | 9,211 | 600 | 10'-4" | 27'-0" | 35'-4" | 13'-9" | N/A | 10'-10.5" |
| 4115-PBW-10-6 | 9,442 | 615 | 10'-4" | 27'-8" | 35'-4" | 14'-1" | N/A | 10'-10.5" |
| 4215-PBW-10-6 | 9,672 | 630 | 10'-4" | 28'-4" | 35'-4" | 14'-5" | N/A | 10'-10.5" |
| 4315-PBW-10-6 | 9,902 | 645 | 10'-4" | 29'-0" | 35'-4" | 14'-9" | N/A | 10'-10.5" |
| 4415-PBW-10-6 | 10,132 | 660 | 10'-4" | 29'-8" | 35'-4" | 15'-1" | N/A | 10'-10.5" |
| 4515-PBW-10-6 | 10,363 | 675 | 10'-4" | 30'-4" | 35'-4" | 15'-5" | N/A | 10'-10.5" |
| 4615-PBW-10-6 | 10,593 | 690 | 10'-4" | 31'-0" | 35'-4" | 15'-9" | N/A | 10'-10.5" |
| 4715-PBW-10-6 | 10,823 | 705 | 10'-4" | 31'-8" | 35'-4" | 11'-0" | 10'-2" | 10'-10.5" |
| 4815-PBW-10-6 | 11,053 | 720 | 10'-4" | 32'-4" | 35'-4" | 11'-4" | 10'-2" | 10'-10.5" |
| 4915-PBW-10-6 | 11,284 | 735 | 10'-4" | 33'-0" | 35'-4" | 11'-8" | 10'-2" | 10'-10.5" |
| 5015-PBW-10-6 | 11,514 | 750 | 10'-4" | 33'-8" | 35'-4" | 11'-6" | 11'-2" | 10'-10.5" |
| 5115-PBW-10-6 | 11,744 | 765 | 10'-4" | 34'-4" | 35'-4" | 11'-10" | 11'-2" | 10'-10.5" |
| 5215-PBW-10-6 | 11,974 | 780 | 10'-4" | 35'-0" | 35'-4" | 12'-2" | 11'-2" | 10'-10.5" |
| 5315-PBW-10-6 | 12,205 | 795 | 10'-4" | 35'-8" | 35'-4" | 12'-6" | 11'-2" | 10'-10.5" |
| 5415-PBW-10-6 | 12,435 | 810 | 10'-4" | 36'-4" | 35'-4" | 12'-10" | 11'-2" | 10'-10.5" |
| 5515-PBW-10-6 | 12,665 | 825 | 10'-4" | 37'-0" | 35'-4" | 12'-8" | 12'-2" | 10'-10.5" |
| 5615-PBW-10-6 | 12,896 | 840 | 10'-4" | 37'-8" | 35'-4" | 13'-0" | 12'-2" | 10'-10.5" |
| 5715-PBW-10-6 | 13,126 | 855 | 10'-4" | 38'-4" | 35'-4" | 13'-4" | 12'-2" | 10'-10.5" |
| 5815-PBW-10-6 | 13,356 | 870 | 10'-4" | 39'-0" | 35'-4" | 13'-8" | 12'-2" | 10'-10.5" |
| 5915-PBW-10-6 | 13,587 | 885 | 10'-4" | 39'-8" | 35'-4" | 14'-0" | 12'-2" | 10'-10.5" |
| 6015-PBW-10-6 | 13,817 | 900 | 10'-4" | 40'-4" | 35'-4" | 13'-9" | 13'-4" | 10'-10.5" |

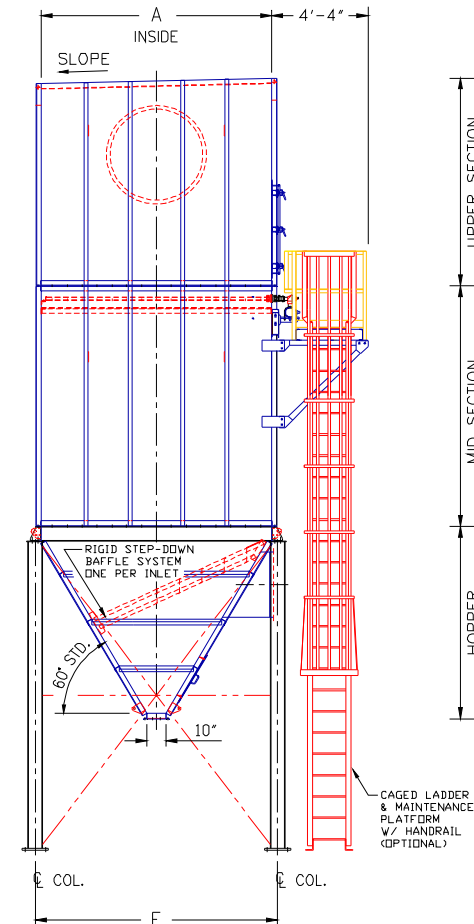
DIMENSIONS ARE NOT CERTIFIED



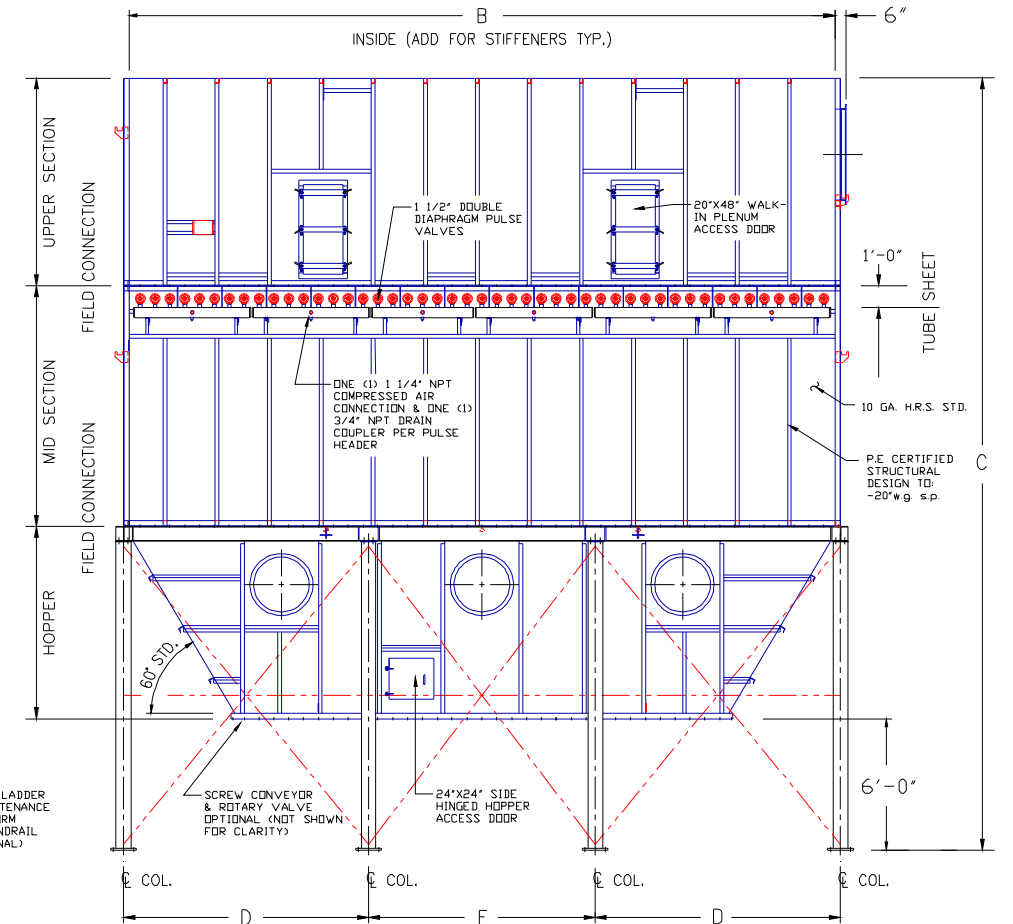
TYPICAL DUST COLLECTOR COLUMN BASE PLATE DETAIL



PLAN VIEW



END VIEW



FRONT VIEW



CALL 1-800-868-9297 FOR ASSISTANCE

EXTENDED SERIES LIBERATOR PBW COLLECTORS
10' FILTERS, 6' DISCHARGE HT.
PRODUCT MAY BE UPDATED WITHOUT NOTICE

THIS DRAWING IS THE PROPERTY OF SCHUST ENGINEERING INCORPORATED AND IS LOANED SUBJECT TO THE CONDITION THAT IT SHALL NOT BE REPRODUCED, COPIED, LOANED OR OTHERWISE DISPOSED OF, DIRECTLY OR INDIRECTLY. IT SHALL BE USED AS A MEANS OF REFERENCE TO WORK FURNISHED BY THIS COMPANY ONLY AND IS NOT TO BE SUBMITTED TO OUTSIDE PARTIES FOR EXAMINATION WITHOUT OUR WRITTEN APPROVAL.

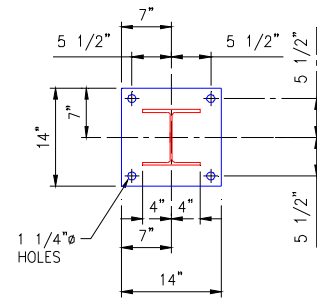
| | | | | | |
|----------|-----------|------------|------------|----------------|------|
| DRAWN BY | DWG. DATE | CHECKED BY | DWG. SCALE | DRAWING NUMBER | REV. |
| WF/DP | 10/15/13 | | NTS | | |



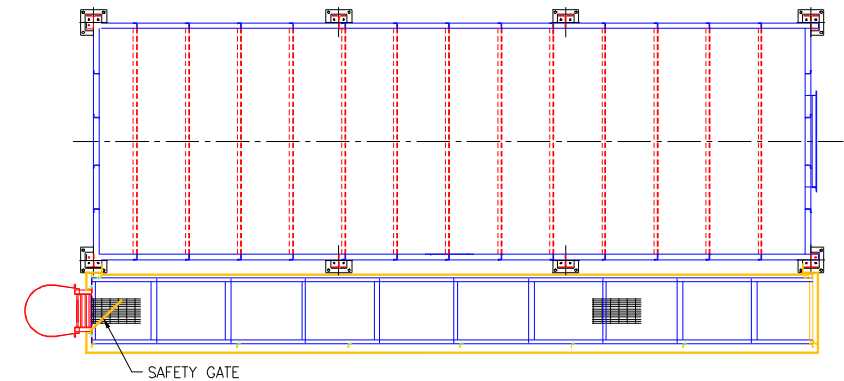
Extended Modules: Pulse-Jet Walk-In Access Design

| Extended Series Pulse-Jet Baghouses W/ Walk-In Access | | | | | | | | |
|---|----------------------|-------------|------------|--------|--------|---------|--------|-----------|
| Model Number | Cloth Area (sq. ft.) | No. of Bags | Dimensions | | | | | |
| | | | A | B | C | D | E | F |
| 2015-PBW-10-8 | 4,606 | 300 | 10'-4" | 13'-8" | 37'-4" | 14'-2" | N/A | 10'-10.5" |
| 2115-PBW-10-8 | 4,836 | 315 | 10'-4" | 14'-4" | 37'-4" | 14'-10" | N/A | 10'-10.5" |
| 2215-PBW-10-8 | 5,066 | 330 | 10'-4" | 15'-0" | 37'-4" | 15'-6" | N/A | 10'-10.5" |
| 2315-PBW-10-8 | 5,296 | 345 | 10'-4" | 15'-8" | 37'-4" | 16'-2" | N/A | 10'-10.5" |
| 2415-PBW-10-8 | 5,527 | 360 | 10'-4" | 16'-4" | 37'-4" | 16'-10" | N/A | 10'-10.5" |
| 2515-PBW-10-8 | 5,757 | 375 | 10'-4" | 17'-0" | 37'-4" | 17'-6" | N/A | 10'-10.5" |
| 2615-PBW-10-8 | 5,987 | 390 | 10'-4" | 17'-8" | 37'-4" | 18'-2" | N/A | 10'-10.5" |
| 2715-PBW-10-8 | 6,218 | 405 | 10'-4" | 18'-4" | 37'-4" | 9'-5" | N/A | 10'-10.5" |
| 2815-PBW-10-8 | 6,448 | 420 | 10'-4" | 19'-0" | 37'-4" | 9'-9" | N/A | 10'-10.5" |
| 2915-PBW-10-8 | 6,678 | 435 | 10'-4" | 19'-8" | 37'-4" | 10'-1" | N/A | 10'-10.5" |
| 3015-PBW-10-8 | 6,910 | 450 | 10'-4" | 20'-4" | 37'-4" | 10'-5" | N/A | 10'-10.5" |
| 3115-PBW-10-8 | 7,139 | 465 | 10'-4" | 21'-0" | 37'-4" | 10'-9" | N/A | 10'-10.5" |
| 3215-PBW-10-8 | 7,369 | 480 | 10'-4" | 21'-8" | 37'-4" | 11'-1" | N/A | 10'-10.5" |
| 3315-PBW-10-8 | 7,599 | 495 | 10'-4" | 22'-4" | 37'-4" | 11'-5" | N/A | 10'-10.5" |
| 3415-PBW-10-8 | 7,830 | 510 | 10'-4" | 23'-0" | 37'-4" | 11'-9" | N/A | 10'-10.5" |
| 3515-PBW-10-8 | 8,060 | 525 | 10'-4" | 23'-8" | 37'-4" | 12'-1" | N/A | 10'-10.5" |
| 3615-PBW-10-8 | 8,290 | 540 | 10'-4" | 24'-4" | 37'-4" | 12'-5" | N/A | 10'-10.5" |
| 3715-PBW-10-8 | 8,521 | 555 | 10'-4" | 25'-0" | 37'-4" | 12'-9" | N/A | 10'-10.5" |
| 3815-PBW-10-8 | 8,751 | 570 | 10'-4" | 25'-8" | 37'-4" | 13'-1" | N/A | 10'-10.5" |
| 3915-PBW-10-8 | 8,981 | 585 | 10'-4" | 26'-4" | 37'-4" | 13'-5" | N/A | 10'-10.5" |
| 4015-PBW-10-8 | 9,211 | 600 | 10'-4" | 27'-0" | 37'-4" | 13'-9" | N/A | 10'-10.5" |
| 4115-PBW-10-8 | 9,442 | 615 | 10'-4" | 27'-8" | 37'-4" | 14'-1" | N/A | 10'-10.5" |
| 4215-PBW-10-8 | 9,672 | 630 | 10'-4" | 28'-4" | 37'-4" | 14'-5" | N/A | 10'-10.5" |
| 4315-PBW-10-8 | 9,902 | 645 | 10'-4" | 29'-0" | 37'-4" | 14'-9" | N/A | 10'-10.5" |
| 4415-PBW-10-8 | 10,132 | 660 | 10'-4" | 29'-8" | 37'-4" | 15'-1" | N/A | 10'-10.5" |
| 4515-PBW-10-8 | 10,363 | 675 | 10'-4" | 30'-4" | 37'-4" | 15'-5" | N/A | 10'-10.5" |
| 4615-PBW-10-8 | 10,593 | 690 | 10'-4" | 31'-0" | 37'-4" | 15'-9" | N/A | 10'-10.5" |
| 4715-PBW-10-8 | 10,823 | 705 | 10'-4" | 31'-8" | 37'-4" | 11'-0" | 10'-2" | 10'-10.5" |
| 4815-PBW-10-8 | 11,053 | 720 | 10'-4" | 32'-4" | 37'-4" | 11'-4" | 10'-2" | 10'-10.5" |
| 4915-PBW-10-8 | 11,284 | 735 | 10'-4" | 33'-0" | 37'-4" | 11'-8" | 10'-2" | 10'-10.5" |
| 5015-PBW-10-8 | 11,514 | 750 | 10'-4" | 33'-8" | 37'-4" | 11'-6" | 11'-2" | 10'-10.5" |
| 5115-PBW-10-8 | 11,744 | 765 | 10'-4" | 34'-4" | 37'-4" | 11'-10" | 11'-2" | 10'-10.5" |
| 5215-PBW-10-8 | 11,974 | 780 | 10'-4" | 35'-0" | 37'-4" | 12'-2" | 11'-2" | 10'-10.5" |
| 5315-PBW-10-8 | 12,205 | 795 | 10'-4" | 35'-8" | 37'-4" | 12'-6" | 11'-2" | 10'-10.5" |
| 5415-PBW-10-8 | 12,435 | 810 | 10'-4" | 36'-4" | 37'-4" | 12'-10" | 11'-2" | 10'-10.5" |
| 5515-PBW-10-8 | 12,665 | 825 | 10'-4" | 37'-0" | 37'-4" | 12'-8" | 12'-2" | 10'-10.5" |
| 5615-PBW-10-8 | 12,896 | 840 | 10'-4" | 37'-8" | 37'-4" | 13'-0" | 12'-2" | 10'-10.5" |
| 5715-PBW-10-8 | 13,126 | 855 | 10'-4" | 38'-4" | 37'-4" | 13'-4" | 12'-2" | 10'-10.5" |
| 5815-PBW-10-8 | 13,356 | 870 | 10'-4" | 39'-0" | 37'-4" | 13'-8" | 12'-2" | 10'-10.5" |
| 5915-PBW-10-8 | 13,587 | 885 | 10'-4" | 39'-8" | 37'-4" | 14'-0" | 12'-2" | 10'-10.5" |
| 6015-PBW-10-8 | 13,817 | 900 | 10'-4" | 40'-4" | 37'-4" | 13'-9" | 13'-4" | 10'-10.5" |

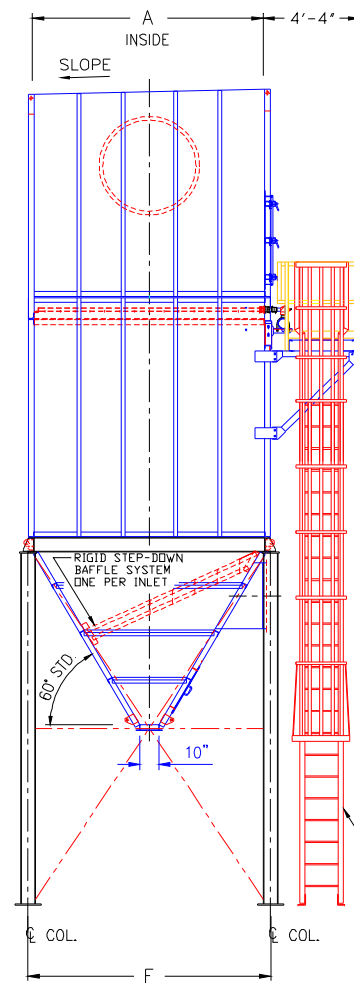
DIMENSIONS ARE NOT CERTIFIED



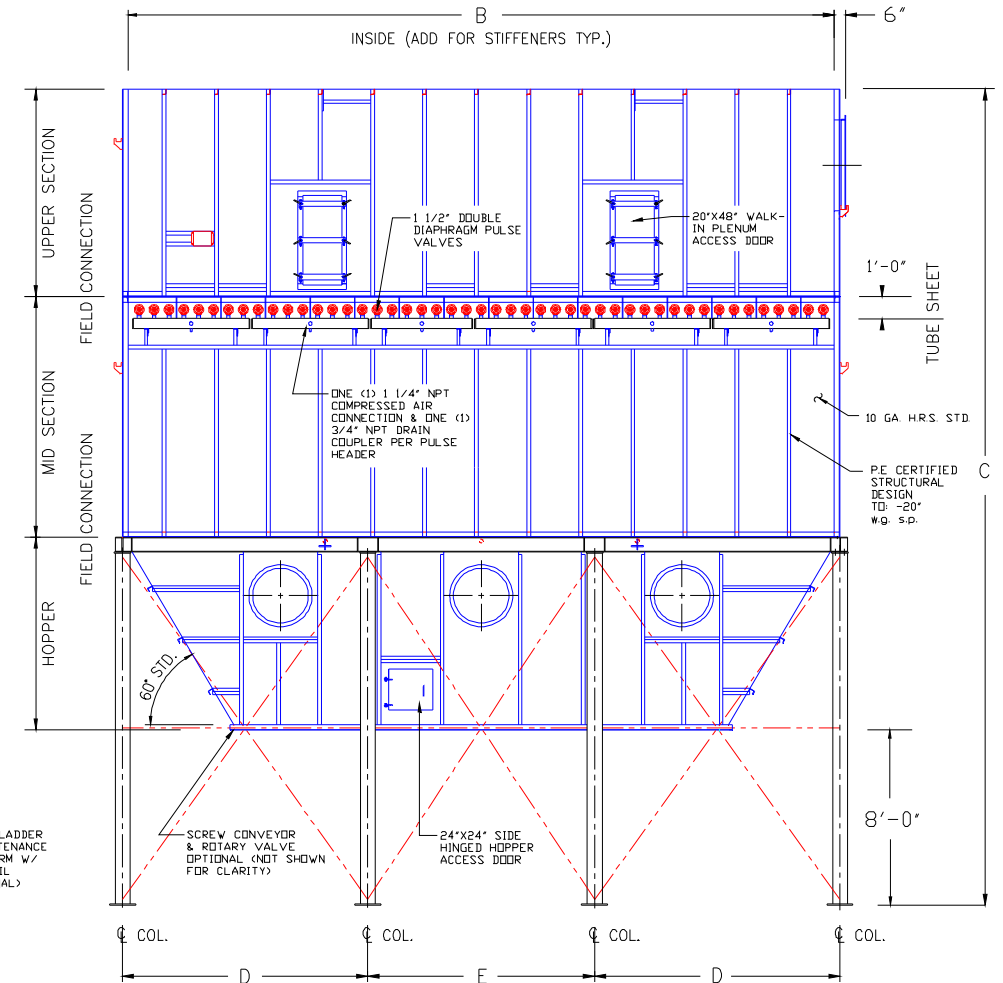
TYPICAL DUST COLLECTOR COLUMN BASE PLATE DETAIL



PLAN VIEW



END VIEW



FRONT VIEW



CALL 1-800-868-9297 FOR ASSISTANCE

EXTENDED SERIES LIBERATOR PBW COLLECTORS 10' FILTERS, 8' STEEL PRODUCT MAY BE UPDATED WITHOUT NOTICE

THIS DRAWING IS THE PROPERTY OF SCHUST ENGINEERING INCORPORATED AND IS LOANED SUBJECT TO THE CONDITION THAT IT SHALL NOT BE REPRODUCED, COPIED, LOANED OR OTHERWISE DISPOSED OF, DIRECTLY OR INDIRECTLY. IT SHALL BE USED AS A MEANS OF REFERENCE TO WORK FURNISHED BY THIS COMPANY ONLY AND IS NOT TO BE SUBMITTED TO OUTSIDE PARTIES FOR EXAMINATION WITHOUT OUR WRITTEN APPROVAL.

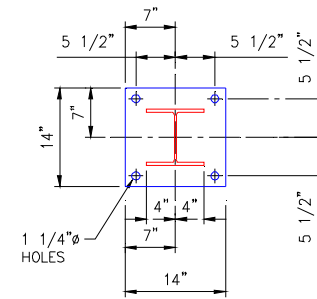
| | | | | | |
|----------|-----------|------------|------------|----------------|------|
| DRAWN BY | DWG. DATE | CHECKED BY | DWG. SCALE | DRAWING NUMBER | REV. |
| WF/DP | | | NTS | | |



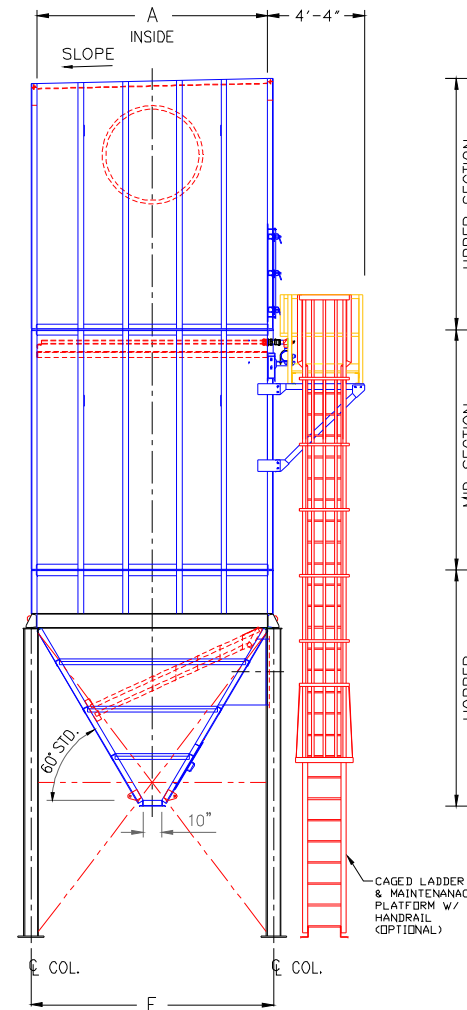
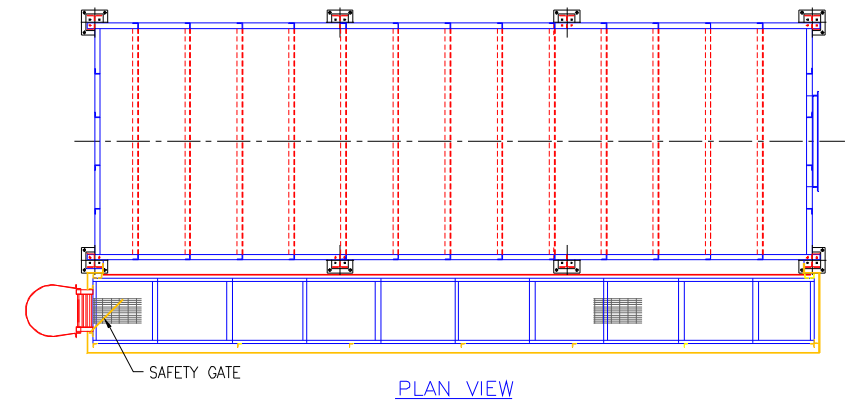
Extended Modules: Pulse-Jet Walk-In Access Design

| Extended Series Pulse-Jet Baghouses W/ Walk-In Access | | | | | | | | |
|---|----------------------|-------------|------------|--------|--------|---------|--------|-----------|
| Model Number | Cloth Area (sq. ft.) | No. of Bags | Dimensions | | | | | |
| | | | A | B | C | D | E | F |
| 2015-PBW-12-6 | 5,531 | 300 | 10'-4" | 13'-8" | 39'-4" | 14'-2" | N/A | 10'-10.5" |
| 2115-PBW-12-6 | 5,807 | 315 | 10'-4" | 14'-4" | 39'-4" | 14'-10" | N/A | 10'-10.5" |
| 2215-PBW-12-6 | 6,084 | 330 | 10'-4" | 15'-0" | 39'-4" | 15'-6" | N/A | 10'-10.5" |
| 2315-PBW-12-6 | 6,360 | 345 | 10'-4" | 15'-8" | 39'-4" | 16'-2" | N/A | 10'-10.5" |
| 2415-PBW-12-6 | 6,637 | 360 | 10'-4" | 16'-4" | 39'-4" | 16'-10" | N/A | 10'-10.5" |
| 2515-PBW-12-6 | 6,913 | 375 | 10'-4" | 17'-0" | 39'-4" | 17'-6" | N/A | 10'-10.5" |
| 2615-PBW-12-6 | 7,190 | 390 | 10'-4" | 17'-8" | 39'-4" | 18'-2" | N/A | 10'-10.5" |
| 2715-PBW-12-6 | 7,466 | 405 | 10'-4" | 18'-4" | 39'-4" | 9'-5" | N/A | 10'-10.5" |
| 2815-PBW-12-6 | 7,743 | 420 | 10'-4" | 19'-0" | 39'-4" | 9'-9" | N/A | 10'-10.5" |
| 2915-PBW-12-6 | 8,020 | 435 | 10'-4" | 19'-8" | 39'-4" | 10'-1" | N/A | 10'-10.5" |
| 3015-PBW-12-6 | 8,296 | 450 | 10'-4" | 20'-4" | 39'-4" | 10'-5" | N/A | 10'-10.5" |
| 3115-PBW-12-6 | 8,573 | 465 | 10'-4" | 21'-0" | 39'-4" | 10'-9" | N/A | 10'-10.5" |
| 3215-PBW-12-6 | 8,849 | 480 | 10'-4" | 21'-8" | 39'-4" | 11'-1" | N/A | 10'-10.5" |
| 3315-PBW-12-6 | 9,126 | 495 | 10'-4" | 22'-4" | 39'-4" | 11'-5" | N/A | 10'-10.5" |
| 3415-PBW-12-6 | 9,402 | 510 | 10'-4" | 23'-0" | 39'-4" | 11'-9" | N/A | 10'-10.5" |
| 3515-PBW-12-6 | 9,679 | 525 | 10'-4" | 23'-8" | 39'-4" | 12'-1" | N/A | 10'-10.5" |
| 3615-PBW-12-6 | 9,955 | 540 | 10'-4" | 24'-4" | 39'-4" | 12'-5" | N/A | 10'-10.5" |
| 3715-PBW-12-6 | 10,232 | 555 | 10'-4" | 25'-0" | 39'-4" | 12'-9" | N/A | 10'-10.5" |
| 3815-PBW-12-6 | 10,508 | 570 | 10'-4" | 25'-8" | 39'-4" | 13'-1" | N/A | 10'-10.5" |
| 3915-PBW-12-6 | 10,785 | 585 | 10'-4" | 26'-4" | 39'-4" | 13'-5" | N/A | 10'-10.5" |
| 4015-PBW-12-6 | 11,061 | 600 | 10'-4" | 27'-0" | 39'-4" | 13'-9" | N/A | 10'-10.5" |
| 4115-PBW-12-6 | 11,338 | 615 | 10'-4" | 27'-8" | 39'-4" | 14'-1" | N/A | 10'-10.5" |
| 4215-PBW-12-6 | 11,615 | 630 | 10'-4" | 28'-4" | 39'-4" | 14'-5" | N/A | 10'-10.5" |
| 4315-PBW-12-6 | 11,891 | 645 | 10'-4" | 29'-0" | 39'-4" | 14'-9" | N/A | 10'-10.5" |
| 4415-PBW-12-6 | 12,168 | 660 | 10'-4" | 29'-8" | 39'-4" | 15'-1" | N/A | 10'-10.5" |
| 4515-PBW-12-6 | 12,444 | 675 | 10'-4" | 30'-4" | 39'-4" | 15'-5" | N/A | 10'-10.5" |
| 4615-PBW-12-6 | 12,721 | 690 | 10'-4" | 31'-0" | 39'-4" | 15'-9" | N/A | 10'-10.5" |
| 4715-PBW-12-6 | 12,997 | 705 | 10'-4" | 31'-8" | 39'-4" | 11'-0" | 10'-2" | 10'-10.5" |
| 4815-PBW-12-6 | 13,274 | 720 | 10'-4" | 32'-4" | 39'-4" | 11'-4" | 10'-2" | 10'-10.5" |
| 4915-PBW-12-6 | 13,550 | 735 | 10'-4" | 33'-0" | 39'-4" | 11'-8" | 10'-2" | 10'-10.5" |
| 5015-PBW-12-6 | 13,827 | 750 | 10'-4" | 33'-8" | 39'-4" | 11'-6" | 11'-2" | 10'-10.5" |
| 5115-PBW-12-6 | 14,103 | 765 | 10'-4" | 34'-4" | 39'-4" | 11'-10" | 11'-2" | 10'-10.5" |
| 5215-PBW-12-6 | 14,380 | 780 | 10'-4" | 35'-0" | 39'-4" | 12'-2" | 11'-2" | 10'-10.5" |
| 5315-PBW-12-6 | 14,656 | 795 | 10'-4" | 35'-8" | 39'-4" | 12'-6" | 11'-2" | 10'-10.5" |
| 5415-PBW-12-6 | 14,933 | 810 | 10'-4" | 36'-4" | 39'-4" | 12'-10" | 11'-2" | 10'-10.5" |
| 5515-PBW-12-6 | 15,210 | 825 | 10'-4" | 37'-0" | 39'-4" | 12'-8" | 12'-2" | 10'-10.5" |
| 5615-PBW-12-6 | 15,486 | 840 | 10'-4" | 37'-8" | 39'-4" | 13'-0" | 12'-2" | 10'-10.5" |
| 5715-PBW-12-6 | 15,763 | 855 | 10'-4" | 38'-4" | 39'-4" | 13'-4" | 12'-2" | 10'-10.5" |
| 5815-PBW-12-6 | 16,039 | 870 | 10'-4" | 39'-0" | 39'-4" | 13'-8" | 12'-2" | 10'-10.5" |
| 5915-PBW-12-6 | 16,316 | 885 | 10'-4" | 39'-8" | 39'-4" | 14'-0" | 12'-2" | 10'-10.5" |
| 6015-PBW-12-6 | 16,592 | 900 | 10'-4" | 40'-4" | 39'-4" | 13'-9" | 13'-4" | 10'-10.5" |

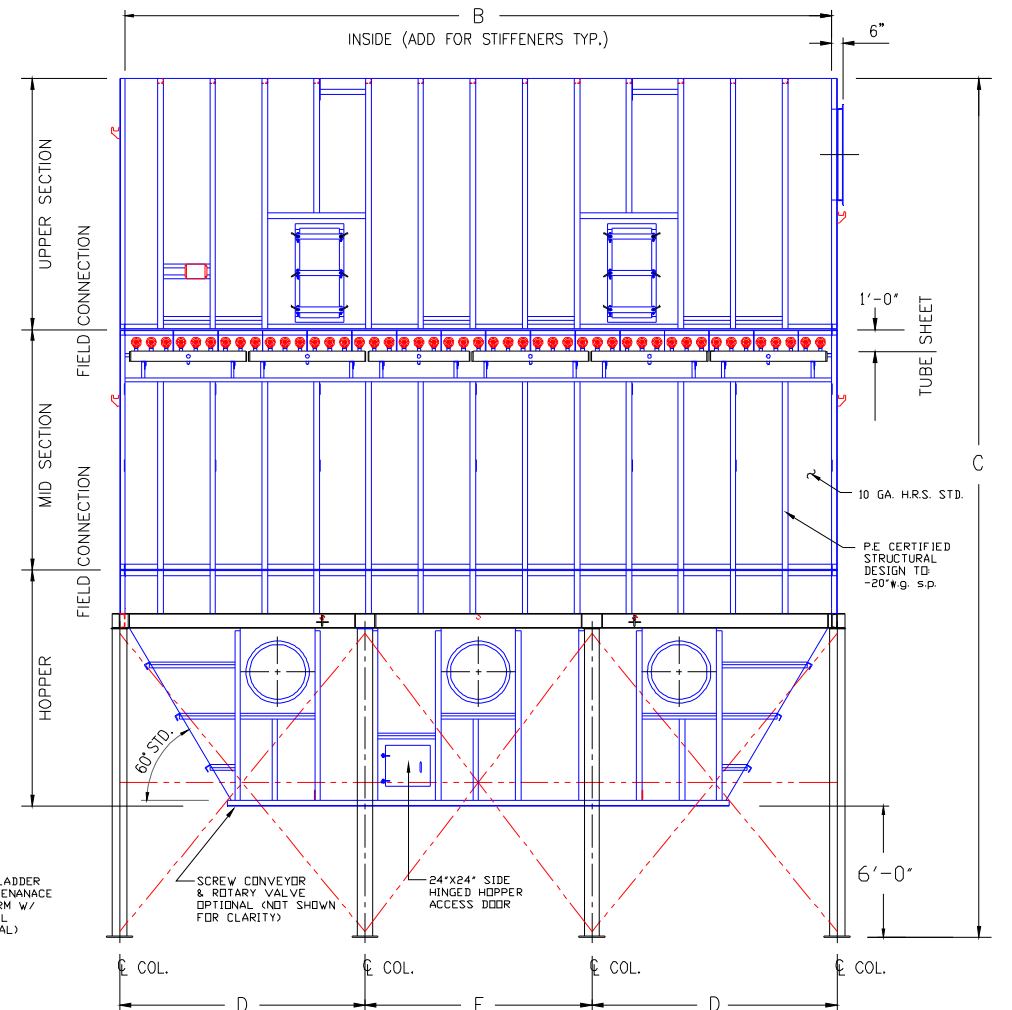
DIMENSIONS ARE NOT CERTIFIED



TYPICAL DUST COLLECTOR COLUMN BASE PLATE DETAIL



END VIEW



FRONT VIEW



CALL 1-800-868-9297 FOR ASSISTANCE

EXTENDED SERIES LIBERATOR PBW COLLECTORS
12' FILTERS, 6' DISCHARGE HEIGHT
PRODUCT MAY BE UPDATED WITHOUT NOTICE

THIS DRAWING IS THE PROPERTY OF SCHUST ENGINEERING INCORPORATED AND IS LOANED SUBJECT TO THE CONDITION THAT IT SHALL NOT BE REPRODUCED, COPIED, LOANED OR OTHERWISE DISPOSED OF, DIRECTLY OR INDIRECTLY. IT SHALL BE USED AS A MEANS OF REFERENCE TO WORK FURNISHED BY THIS COMPANY ONLY AND IS NOT TO BE SUBMITTED TO OUTSIDE PARTIES FOR EXAMINATION WITHOUT OUR WRITTEN APPROVAL.

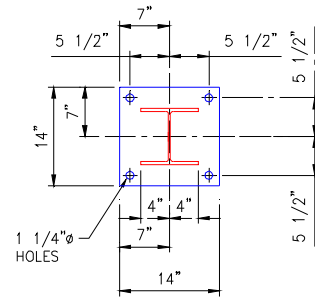
| | | | | | |
|----------|-----------|------------|------------|----------------|------|
| DRAWN BY | DWG. DATE | CHECKED BY | DWG. SCALE | DRAWING NUMBER | REV. |
| WF/DP | 1/20/14 | | NTS | | |



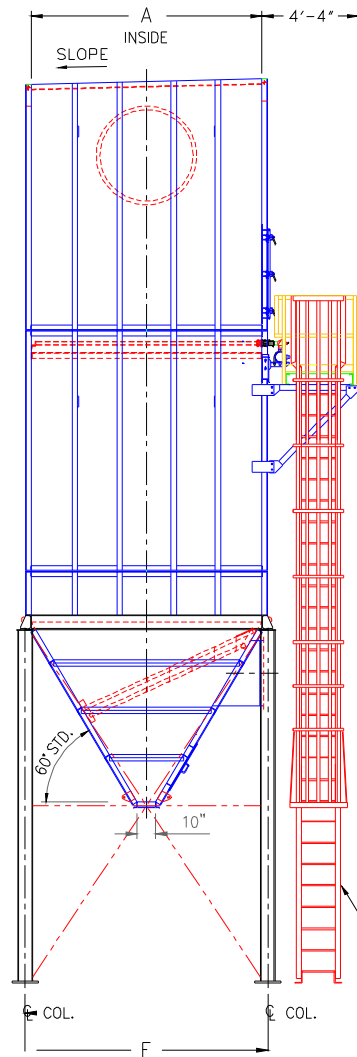
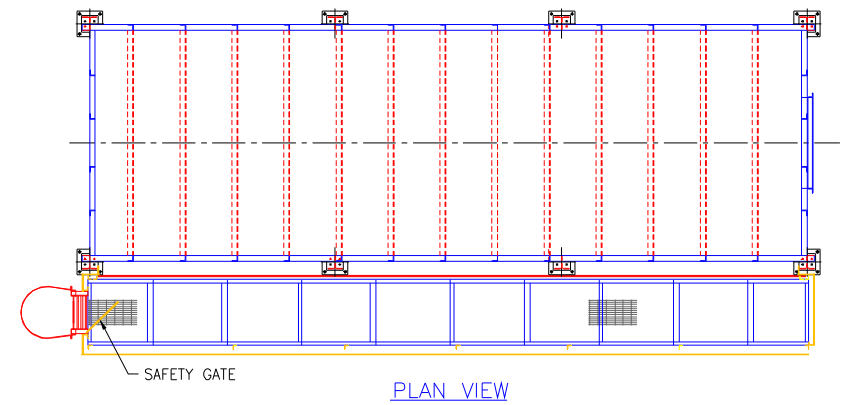
| Extended Series Pulse-Jet Baghouses W/ Walk-In Access | | | | | | | | |
|---|----------------------|-------------|------------|--------|--------|---------|--------|-----------|
| Model Number | Cloth Area (sq. ft.) | No. of Bags | Dimensions | | | | | |
| | | | A | B | C | D | E | F |
| 2015-PBW-12-8 | 5,531 | 300 | 10'-4" | 13'-8" | 41'-4" | 14'-2" | N/A | 10'-10.5" |
| 2115-PBW-12-8 | 5,807 | 315 | 10'-4" | 14'-4" | 41'-4" | 14'-10" | N/A | 10'-10.5" |
| 2215-PBW-12-8 | 6,084 | 330 | 10'-4" | 15'-0" | 41'-4" | 15'-6" | N/A | 10'-10.5" |
| 2315-PBW-12-8 | 6,360 | 345 | 10'-4" | 15'-8" | 41'-4" | 16'-2" | N/A | 10'-10.5" |
| 2415-PBW-12-8 | 6,637 | 360 | 10'-4" | 16'-4" | 41'-4" | 16'-10" | N/A | 10'-10.5" |
| 2515-PBW-12-8 | 6,913 | 375 | 10'-4" | 17'-0" | 41'-4" | 17'-6" | N/A | 10'-10.5" |
| 2615-PBW-12-8 | 7,190 | 390 | 10'-4" | 17'-8" | 41'-4" | 18'-2" | N/A | 10'-10.5" |
| 2715-PBW-12-8 | 7,466 | 405 | 10'-4" | 18'-4" | 41'-4" | 9'-5" | N/A | 10'-10.5" |
| 2815-PBW-12-8 | 7,743 | 420 | 10'-4" | 19'-0" | 41'-4" | 9'-9" | N/A | 10'-10.5" |
| 2915-PBW-12-8 | 8,020 | 435 | 10'-4" | 19'-8" | 41'-4" | 10'-1" | N/A | 10'-10.5" |
| 3015-PBW-12-8 | 8,296 | 450 | 10'-4" | 20'-4" | 41'-4" | 10'-5" | N/A | 10'-10.5" |
| 3115-PBW-12-8 | 8,573 | 465 | 10'-4" | 21'-0" | 41'-4" | 10'-9" | N/A | 10'-10.5" |
| 3215-PBW-12-8 | 8,849 | 480 | 10'-4" | 21'-8" | 41'-4" | 11'-1" | N/A | 10'-10.5" |
| 3315-PBW-12-8 | 9,126 | 495 | 10'-4" | 22'-4" | 41'-4" | 11'-5" | N/A | 10'-10.5" |
| 3415-PBW-12-8 | 9,402 | 510 | 10'-4" | 23'-0" | 41'-4" | 11'-9" | N/A | 10'-10.5" |
| 3515-PBW-12-8 | 9,679 | 525 | 10'-4" | 23'-8" | 41'-4" | 12'-1" | N/A | 10'-10.5" |
| 3615-PBW-12-8 | 9,955 | 540 | 10'-4" | 24'-4" | 41'-4" | 12'-5" | N/A | 10'-10.5" |
| 3715-PBW-12-8 | 10,232 | 555 | 10'-4" | 25'-0" | 41'-4" | 12'-9" | N/A | 10'-10.5" |
| 3815-PBW-12-8 | 10,508 | 570 | 10'-4" | 25'-8" | 41'-4" | 13'-1" | N/A | 10'-10.5" |
| 3915-PBW-12-8 | 10,785 | 585 | 10'-4" | 26'-4" | 41'-4" | 13'-5" | N/A | 10'-10.5" |
| 4015-PBW-12-8 | 11,061 | 600 | 10'-4" | 27'-0" | 41'-4" | 13'-9" | N/A | 10'-10.5" |
| 4115-PBW-12-8 | 11,338 | 615 | 10'-4" | 27'-8" | 41'-4" | 14'-1" | N/A | 10'-10.5" |
| 4215-PBW-12-8 | 11,615 | 630 | 10'-4" | 28'-4" | 41'-4" | 14'-5" | N/A | 10'-10.5" |
| 4315-PBW-12-8 | 11,891 | 645 | 10'-4" | 29'-0" | 41'-4" | 14'-9" | N/A | 10'-10.5" |
| 4415-PBW-12-8 | 12,168 | 660 | 10'-4" | 29'-8" | 41'-4" | 15'-1" | N/A | 10'-10.5" |
| 4515-PBW-12-8 | 12,444 | 675 | 10'-4" | 30'-4" | 41'-4" | 15'-5" | N/A | 10'-10.5" |
| 4615-PBW-12-8 | 12,721 | 690 | 10'-4" | 31'-0" | 41'-4" | 15'-9" | N/A | 10'-10.5" |
| 4715-PBW-12-8 | 12,997 | 705 | 10'-4" | 31'-8" | 41'-4" | 11'-0" | 10'-2" | 10'-10.5" |
| 4815-PBW-12-8 | 13,274 | 720 | 10'-4" | 32'-4" | 41'-4" | 11'-4" | 10'-2" | 10'-10.5" |
| 4915-PBW-12-8 | 13,550 | 735 | 10'-4" | 33'-0" | 41'-4" | 11'-8" | 10'-2" | 10'-10.5" |
| 5015-PBW-12-8 | 13,827 | 750 | 10'-4" | 33'-8" | 41'-4" | 11'-6" | 11'-2" | 10'-10.5" |
| 5115-PBW-12-8 | 14,103 | 765 | 10'-4" | 34'-4" | 41'-4" | 11'-10" | 11'-2" | 10'-10.5" |
| 5215-PBW-12-8 | 14,380 | 780 | 10'-4" | 35'-0" | 41'-4" | 12'-2" | 11'-2" | 10'-10.5" |
| 5315-PBW-12-8 | 14,656 | 795 | 10'-4" | 35'-8" | 41'-4" | 12'-6" | 11'-2" | 10'-10.5" |
| 5415-PBW-12-8 | 14,933 | 810 | 10'-4" | 36'-4" | 41'-4" | 12'-10" | 11'-2" | 10'-10.5" |
| 5515-PBW-12-8 | 15,210 | 825 | 10'-4" | 37'-0" | 41'-4" | 12'-8" | 12'-2" | 10'-10.5" |
| 5615-PBW-12-8 | 15,486 | 840 | 10'-4" | 37'-8" | 41'-4" | 13'-0" | 12'-2" | 10'-10.5" |
| 5715-PBW-12-8 | 15,763 | 855 | 10'-4" | 38'-4" | 41'-4" | 13'-4" | 12'-2" | 10'-10.5" |
| 5815-PBW-12-8 | 16,039 | 870 | 10'-4" | 39'-0" | 41'-4" | 13'-8" | 12'-2" | 10'-10.5" |
| 5915-PBW-12-9 | 16,316 | 885 | 10'-4" | 39'-8" | 41'-4" | 14'-0" | 12'-2" | 10'-10.5" |
| 6015-PBW-12-9 | 16,592 | 900 | 10'-4" | 40'-4" | 41'-4" | 13'-9" | 13'-4" | 10'-10.5" |

DIMENSIONS ARE NOT CERTIFIED

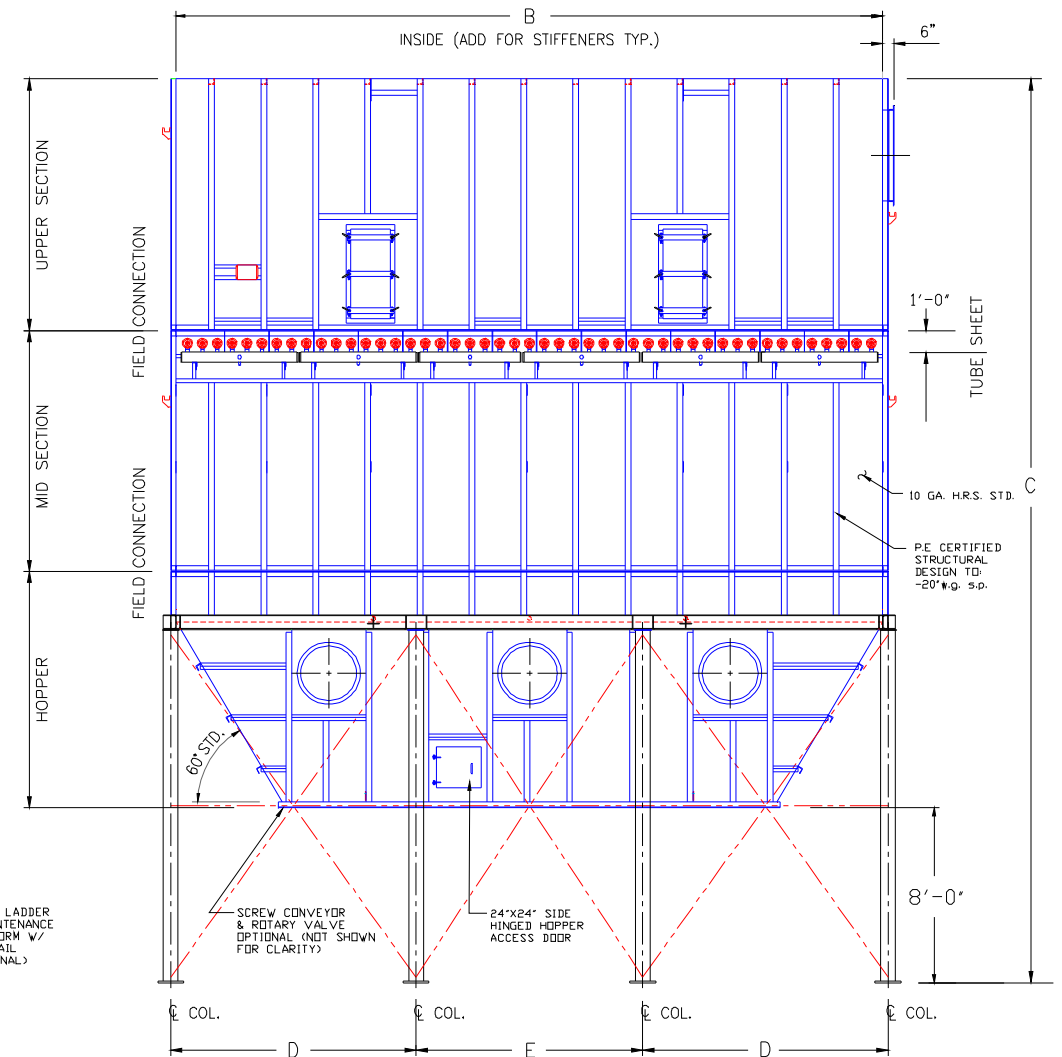
Extended Modules: Pulse-Jet Walk-In Access Design



TYPICAL DUST COLLECTOR COLUMN BASE PLATE DETAIL



END VIEW



FRONT VIEW

CALL 1-800-868-9297 FOR ASSISTANCE

EXTENDED SERIES LIBERATOR PBW COLLECTORS 12' FILTERS, 8' STEEL PRODUCT MAY BE UPDATED WITHOUT NOTICE

| | | | | | | |
|--|-------------------|-----------|-------------------|-------------------|----------------|-----|
| THIS DRAWING IS THE PROPERTY OF SCHUST ENGINEERING INCORPORATED AND IS LOANED SUBJECT TO THE CONDITION THAT IT SHALL NOT BE REPRODUCED, COPIED, LOANED OR OTHERWISE DISPOSED OF, DIRECTLY OR INDIRECTLY. IT SHALL BE USED AS A MEANS OF REFERENCE TO WORK FURNISHED BY THIS COMPANY ONLY AND IS NOT TO BE SUBMITTED TO OUTSIDE PARTIES FOR EXAMINATION WITHOUT OUR WRITTEN APPROVAL. | DRAWN BY WF/DP | DWG. DATE | CHECKED BY NTS | DWG. SCALE NTS | DRAWING NUMBER | REV |
|--|-------------------|-----------|-------------------|-------------------|----------------|-----|